

# The 2014 Physician's Round Table conference

## Accentuating the "heal" in health

Please join us for the 6<sup>th</sup> year of quality conferences for clinicians and other healthcare professionals. We have again put together a conference that will benefit each attendee and exhibitor. Productive exchange of information, peer networking, and the **best** in products are the core of the conference.

### Reasons to join us as an attendee and/or exhibitor:

Highly educational	Pleasant, green surroundings	Relaxed atmosphere
Outstanding staff	Extremely easy on your budget	Great place for family vacation
Networking opportunities	Interaction with experts	Hands-on with exhibitors
CME presentation	Distinguished speakers	Hand selected products
Gordon-style conference	Invaluable Resources	Vital info for next clinic day
New/innovative products	Valuable services	New prospects
Strengthen relationships	New product ideas	International resources
Global exhibits	Evidenced-based research	Relevant clinical material

**Who should attend?** M.D.'s, D.O.'s, N.D.'s, D.C.'s, D.D.S.'s, D.M.D.'s, D.V.M.'s, P.A.'s, N.P.'s, Nurses, Therapists, Ph.D.'s, Medical Students, Hospital/Clinic Administration, Medical Lawyers, Lab Technicians, Healthcare Advocates

**Admission:** \$250.00 single admission Buddy Plan 2/\$400.00 (one invoice)

### Exhibitors:

- Pkg 1 - one table, two chairs/passes, brochure info ad -- \$1,500.00
- Pkg 2 - two tables, four chairs/passes, brochure info ad -- \$2,000.00
- Pkg 3 - Lunch/your speaker, two tables, 4 passes, soup/salad bar w/beverage - request details
- Pkg 4 - Gift Bag inserts, 1 pass, brochure info ad -- \$750.00

Group rates available Space/Seating is limited

Financing available through PayPal

You will receive an invoice via email payable through PayPal with credit or debit card.

For information please email [peerobmagazine@aol.com](mailto:peerobmagazine@aol.com) or call us at 717-254-1953

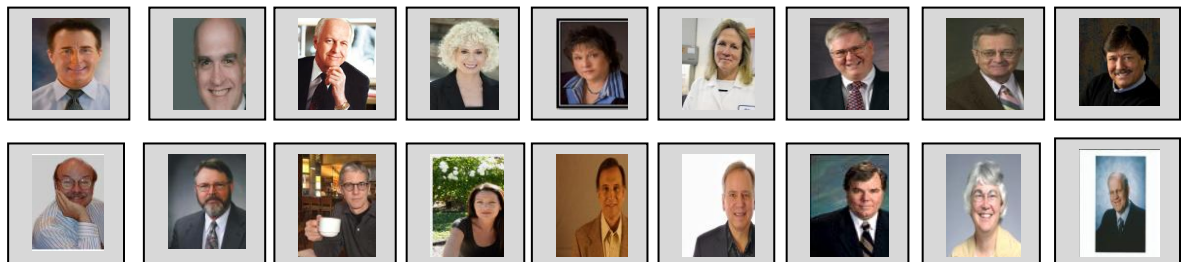
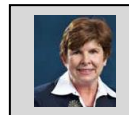
This conference is open to all healthcare professionals; limited seating for non-healthcare professionals.

### SPEAKERS

O. Amin, Ph.D.  
 R. Austin  
 S. Edwards  
 D. Flockhart, M.D., Ph.D.  
 S. Jurasunas, N.D.  
 J. Mikovits, Ph.D.  
 D. Nebert, M.D.  
 A. Rain  
 M. Ross, M.D.  
 S. Seneff, Ph.D.  
 S. Strickland, RN.



R. Armstrong, M.D.  
 E. Cutler, D.C.  
 J. Faber, M.D.  
 J. Forester, M.D.  
 A. MacDonald, M.D.  
 D. Moyer, LCSW  
 M. Payne, MS, CNS, CRC  
 N. Rawlins, M.D.  
 D. Scheiderer, M.D.  
 R. Shoemaker, M.D.  
 R. Tunkel, M.D.



Tampa Marriott Westshore  
 1001 N. Westshore Blvd  
 Tampa, Florida 33607  
 813-282-5312

\$149.00

PHO discount code until 2/19/14

Complimentary airport shuttle

## THE ISLAND BOYS



Saturday 8:30-11:30 PM

The Physician's Round Table  
 Island Getaway

Make sure you dress for the island, limber up, and bring your best singing voice!

Caricatures by Rich Brown  
[Richcaricatures.com](http://Richcaricatures.com)

50/50 Raffle  
 Door Prizes Gift Bags  
 AND MORE!

Sunday Bowl Concert  
 by Robert Austin  
[Crystalbowloundhealer.com](http://Crystalbowloundhealer.com)

# Schedule

## Wednesday

4-7 Registration – Exhibitor set-up

## Thursday

7:45-8 Welcome

8-9 **Michael Payne, MS, CRC, CNS** – Solamar Solution: Clinical Insight in Energy Medicine

9-11 **Omar Amin, Ph.D.** – Ancient Egyptian Medicine

11-1 **Lunch Break**

1-2 **Serge Jurasunas, N.D.** – How to Prevent, Diagnose and Treat Cancer with Molecular Marker Testing: A Revolution in Cancer; Clinical Cases

2-3 **Judy Mikovits, Ph.D.** – Repurposing Drugs for Neuroimmune Disease

3-4 **Robert Austin** – Energy Sound Healing with Crystal and Tibetan Bowls

4-5 **John “Jay” Faber, M.D.** – The Use of Brain SPECT Imaging in the Diagnosis and Treatment of Lyme Disease

5-7 **Round Table** – meet the speakers and exhibitors

**8:30-10:30** *Bipolarized – the movie – with Ross McKenzie*

## Friday

8-9 **Neil Rawlins, M.D.** – Genomic Medicine and MTHFR – Part I

9-10 **Sandra Strickland, R.N., MSN, LHRM, CPHRM** – Risk Management Concerns in Prescribing Controlled Substances -- **CME**

10-11 **Raymond Armstrong, M.D.** – Benzodiazepine Withdrawal Strategies – A Clinical Conundrum

11-1 **Lunch Break**

1-2 **Neil Rawlins, M.D.** – Genomic Medicine and MTHFR – Part II

2-3 **Alesandra Rain** – Benzodiazepine Tolerance and Withdrawal – Syndrome and Recovery

3-4 **Sharry Edwards** – Math is Medicine

4-5 **David Scheiderer, M.D.** – Neuroendo Immunology (NEI) and Disease of Civilization: In Search of a Unifying Theory

5-7 **Round Table** – meet the speakers and exhibitors

**8:30-10:00** *Sharry Edwards: Breaking the Sound Barriers of Disease (hands-on class)*

## Saturday

8-9 **David Moyer, LCSW (AK)** – Borrelia Burgdorferi, Depression and Psychosis

9-11 **Ritchie Shoemaker, M.D.** -- Inflammation in confirmed Lyme disease: It affects every part of your body that receives blood

11-1 **Lunch Break**

1-2 **Alan MacDonald, M.D.**—Neuroborreliosis in the Human Host: Pathology and Clinical Spectrum

2-3 **Marty Ross, M.D.** – Key Supplements & Integrative Medicine Approaches for Lyme Disease Recovery

3-4 **David Flockhart, M.D., Ph.D.** – Implementing Clinical Pharmacogenomics in Large Health Care Systems

4-5 **Daniel Nebert, M.D.** -- Genetics, Genomics and Predicting Risk in ‘Personalized Medicine’

5-7 **Round Table** – meet the speakers and exhibitors

**8:30-11:30** *PRT Island Getaway – enjoy island music with The Island Boys – contests -- cash bar*

## Sunday

8-9 **Stephanie Seneff, Ph.D.** – Is Roundup the Toxic Chemical that’s Destroying Our Health?

9-10 **Ellen Cutler, D.C. & Richard Tunkel, M.D.** – Balancing the Inflammatory Response

10-11 **Jonathan Forester, M.D.** – The Healing Power of Delta Sleep

11-2 **Exhibitor Open House; Caricature Artist; Bowl Concert**

